

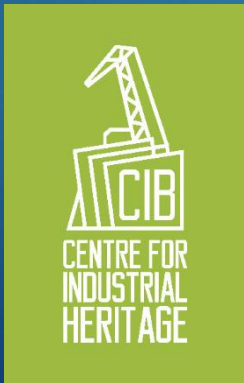
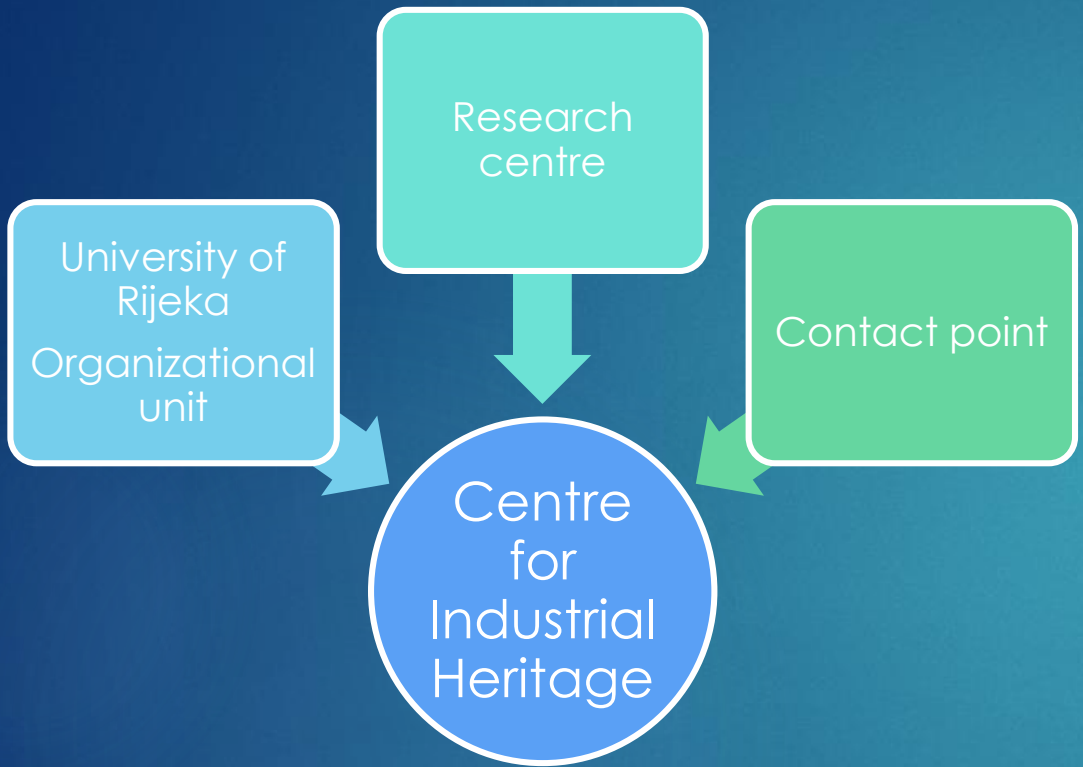


Presentation of industrial heritage using new technologies

CENTRE FOR INDUSTRIAL HERITAGE
UNIVERSITY OF RIJEKA

IVANA GOLOB MIHIĆ
EMA ANIČIĆ

Who are we?



Digitization of Rijeka's industrial heritage

- <http://rijeakaheritage.org>



Digitization of city of Krk's cultural heritage

- <http://history.grad-krk.hr>



Research and design of Krk Culture Map

- Map of the legends and tours around the cultural heritage in the city of Krk

Why digitization?

- ▶ Easy access to information
- ▶ Multiple ways of presenting content
- ▶ Multimedia
- ▶ Mobile use/use on the location
- ▶ User friendly approach
- ▶ Easy connection of different types of content

SEARCH
LAYOUT
BUYER
PERSONAS
FUNCTIONALITY
RESPONSIVE
NAVIGATION
CONTACT
CONTENT
USABILITY



Digitization of industrial heritage

- ▶ SQL data base platform with user friendly backend and frontend

The image shows a screenshot of the RIJEČKA INDUSTRIJA website. The top navigation bar includes links for HOME, ABOUT US, TOURS, MAP, CONTACT, HR, and EN. A search bar is prominently displayed with fields for 'Title' and 'Keyword', and buttons for 'List' and 'FIND'. Below the search bar, there are several images of industrial buildings, including one labeled '1764 Rope Factory of R... operational building'. On the right side, an administrative interface titled 'Pregled kataloških jedinica' (View of catalog units) is visible. It features a table with columns for 'Naziv', 'Tip', 'Vrsta', 'Razdoblje', 'Kreirano', and 'Akcije'. The table lists various industrial heritage units with their respective details and action buttons.

Naziv	Tip	Vrsta	Razdoblje	Kreirano	Akcije
Vila Whitehead	Arhitektura	Kulturna baština	Historicizam	3.6.2014.	Osnovni podaci HR EN Prilozi
Stambena zgrada Rafinerije nafte	Arhitektura	Industrijska baština	Historicizam, Moderna	26.5.2014.	Osnovni podaci HR EN Prilozi
Zgrada za preradu parafina	Arhitektura	Industrijska baština	Historicizam	26.5.2014.	Osnovni podaci HR EN Prilozi
Stambena zgrada Ljuštionice riže	Arhitektura	Industrijska baština	Historicizam	26.5.2014.	Osnovni podaci HR EN Prilozi
Energana Tvornice papira	Arhitektura	Industrijska baština	Moderna	26.5.2014.	Osnovni podaci HR EN Prilozi
Pogon i skladište Tvornice papira	Arhitektura	Industrijska baština	Historicizam	26.5.2014.	Osnovni podaci HR EN Prilozi
Pogonska zgrada Tvornice papira	Arhitektura	Industrijska baština	Historicizam	26.5.2014.	Osnovni podaci HR EN Prilozi
Upravna zgrada Termoelektrane	Arhitektura	Industrijska baština	Historicizam	26.5.2014.	Osnovni podaci HR EN Prilozi

Digitization of industrial heritage

► Different ways of researching the available content

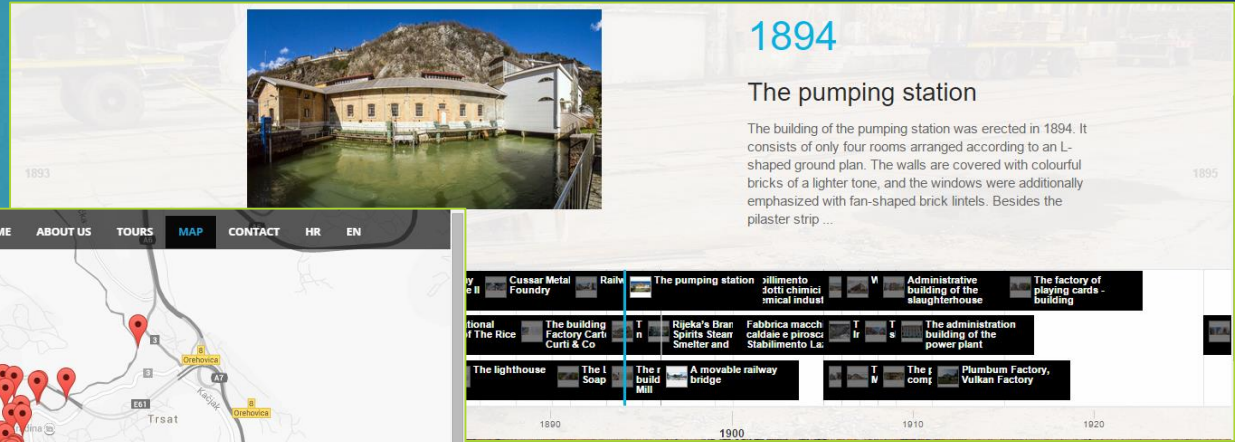
1. Search engine – key word/title



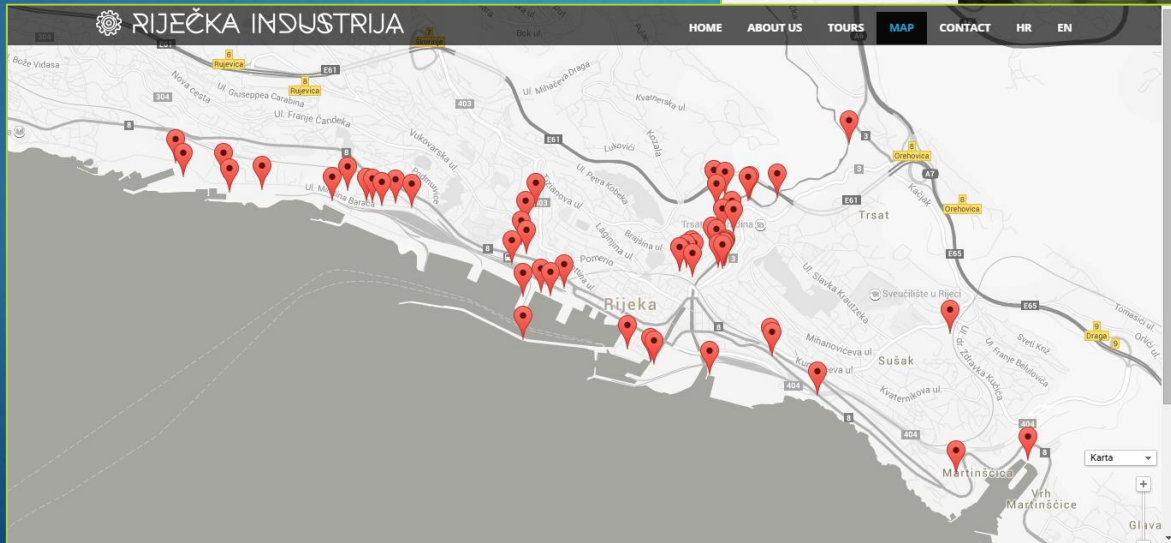
2. List of content



3. Timeline

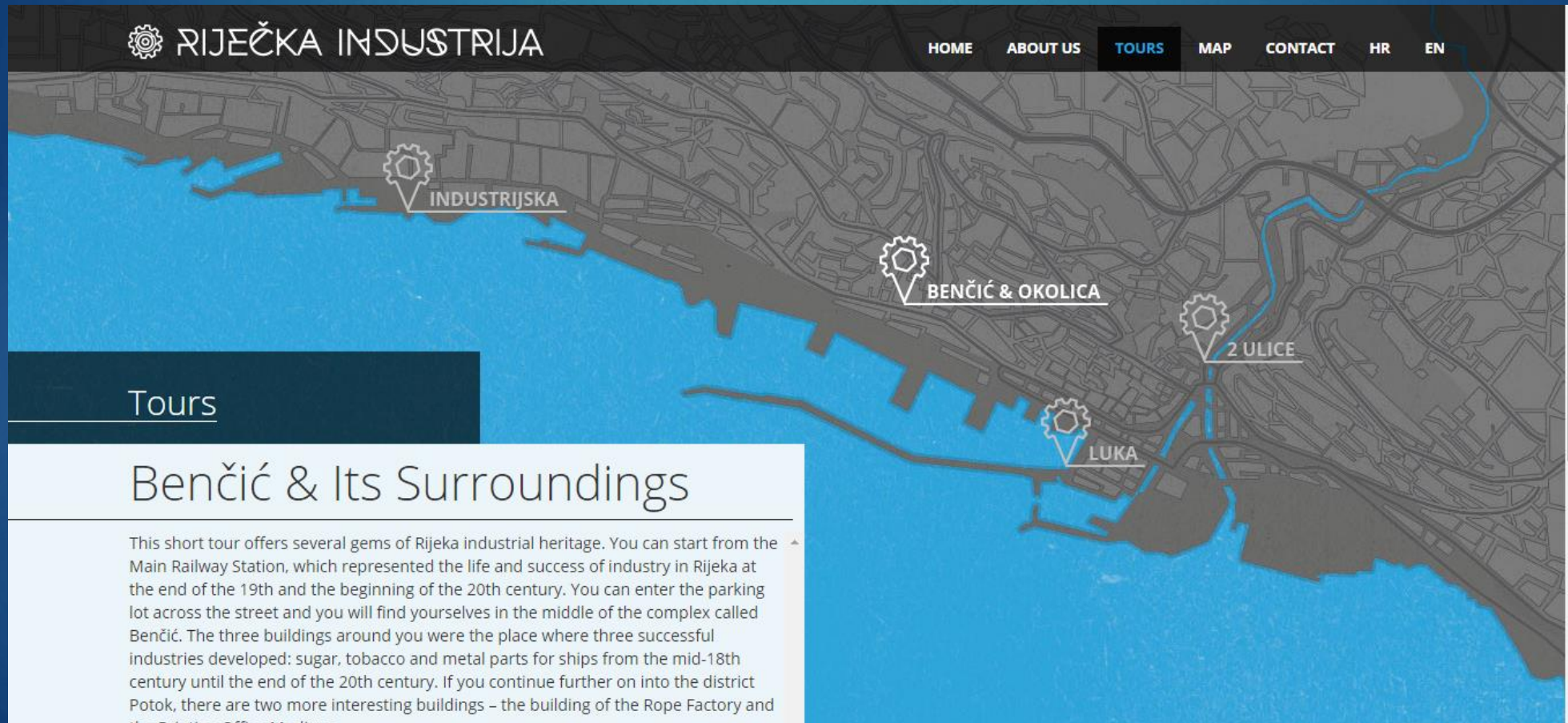


4. Map



Digitization of industrial heritage

- ▶ With suggested tours around the city



RIJEČKA INDUSTRIJA HOME ABOUT US **TOURS** MAP CONTACT HR EN

INDUSTRIJSKA BENČIĆ & OKOLICA 2 ULICE LUKA

Tours

Benčić & Its Surroundings

This short tour offers several gems of Rijeka industrial heritage. You can start from the Main Railway Station, which represented the life and success of industry in Rijeka at the end of the 19th and the beginning of the 20th century. You can enter the parking lot across the street and you will find yourselves in the middle of the complex called Benčić. The three buildings around you were the place where three successful industries developed: sugar, tobacco and metal parts for ships from the mid-18th century until the end of the 20th century. If you continue further on into the district Potok, there are two more interesting buildings – the building of the Rope Factory and the Printing Office Medinec.

Digitization of industrial heritage

► Content adjusted to different interest and age groups

Short info about the location

Description of the location with interesting facts and in simple language

Status of the location

Relevant literature and sources

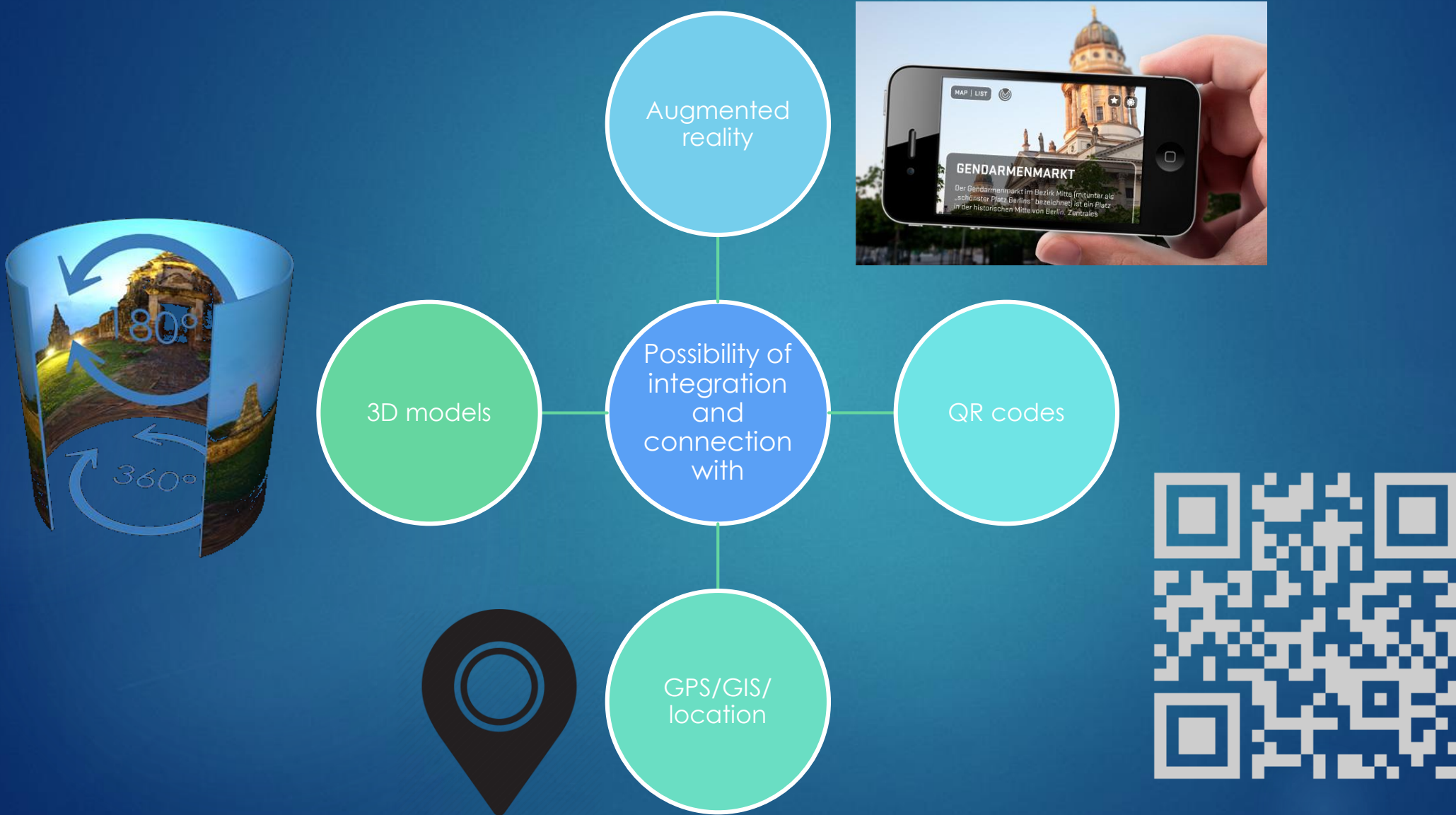
The screenshot shows the website 'RIJEČKA INDUSTRIJA' with a navigation menu (HOME, ABOUT US, TOURS, MAP, CONTACT, HR, EN). The main content area features a 360-degree panoramic view of the Littorale Palace. Below the view, the title reads 'Littorale Palace, The liquor factory Pfau & Co, Tin Can Factory, print shop Tipograf'. The page includes several sections: 'Author', 'address: Šetalište XIII Divisa 16', 'Registration number:', 'Period: Secession/Art Nouveau', 'Kind: Industrial', 'Century: 19', 'Year: 1867', and 'Purpose: industrial'. A map on the right shows the location in Rijeka. The main text describes the building's history, its architectural features, and its status as a cultural heritage site. A 'Valorization' section notes that the building is preserved as a valuable example of Art Nouveau architecture. A 'Bibliography' section lists a source: 'Klen, Danilo (ur.). Povijest Rijeke, Skupština općine Rijeka, ICR, Rijeka, 1988.'

Geo location

Digitization of industrial heritage



Digitization of industrial heritage



Other uses

10



- ▶ Versatility in use - appropriate for:
 - ▶ Small and big towns
 - ▶ Towns, villages or regions
 - ▶ Material or non material heritage
 - ▶ Movable or immovable heritage
 - ▶ Scientific or tourism purpose



Thank you for your attention!

YOU ARE WELCOME TO VISIT RIJEKA - CROATIA