

RAILWAY HERITAGE IN LATVIA

Toms Altbergs

Industrial heritage expert at VAS «Latvijas dzelzceļš»

Railways of Latvia and their development

LATVIJAS DZELZCEĻU KARTE

Mērogs 1 : 600000

10 20 30 40 50 km

“K” platuma dzelzceļi (1524 mm)	— — — — —	741 km
“N” platuma dzelzceļi (1435 mm)	- - - - -	
“SM” platuma dzelzceļi (1000 mm)	
“P” platuma dzelzceļi (750 mm)	
“L” platuma dzelzceļi (600 mm)	



Pirmo 1524 mm jeb krievu platuma dzelzceļu būvniecību Latvijas teritorijā nosaka Krievijas impērijas stratēģiskās un saimnieciskās intereses, un tās galvenokārt ir saistītas ar Rīgas un Liepājas ostu attīstību. Valsts kapitāla trūkuma dēļ, pirmos dzelzceļus būvē iekšējās komersanti.

1860-1875





First World War

LATVIJAS DZELZCEĻU KARTE

Mērogs 1 : 600000
0 10 20 30 40 50 km

"K" platuma dzelzsceļi (1524 mm)	— — — — —	1183 km
"N" platuma dzelzsceļi (1435 mm)	- - - - -	643 km
"M" platuma dzelzsceļi (1000 mm)	49 km
"P" platuma dzelzsceļi (750 mm)	277 km
"L" platuma dzelzsceļi (600 mm)	— — — — —	611 km



Pirmā pasaules kara gados tiek veikta intensīva 600 mm platuma šaursliežu dzelzceļu būvniecība vācu armijas frontes apgādes nodrošināšanai. Militāru apsvērumu Latvijā tiek būvēti 1435 mm normālpplatuma dzelzceļi.

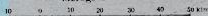
POLSKA
1915-1918



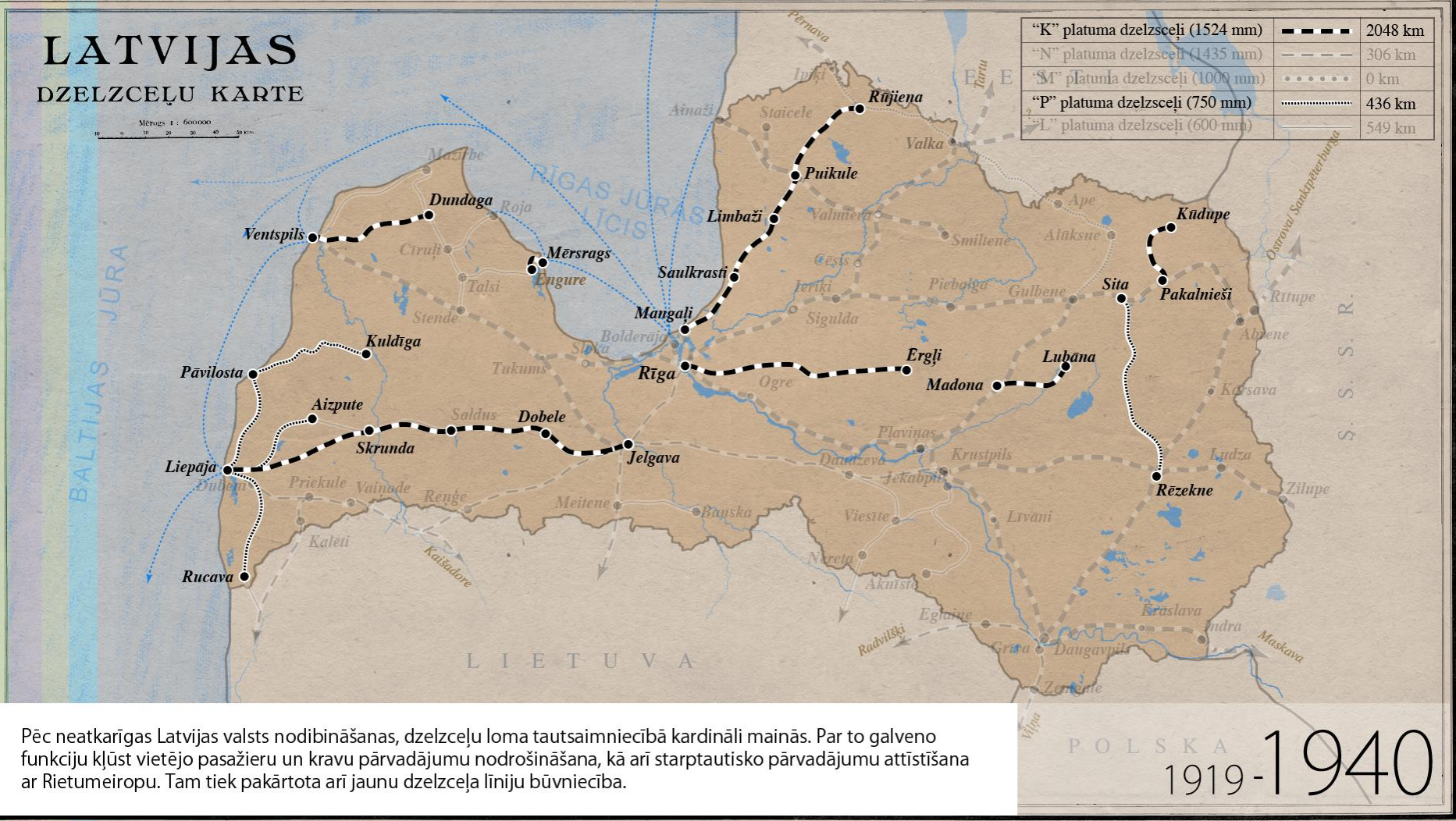
Independent state of Latvia

LATVIJAS DZELZCEĻU KARTE

Mērogs 1 : 600000



“K” platuma dzelzceļi (1524 mm)		2048 km
“N” platuma dzelzceļi (1435 mm)		306 km
“M” platuma dzelzceļi (1000 mm)		0 km
“P” platuma dzelzceļi (750 mm)		436 km
“L” platuma dzelzceļi (600 mm)		549 km



Pēc neatkarīgas Latvijas valsts nodibināšanas, dzelzceļu loma tautsaimniecībā kardināli mainās. Par to galveno funkciju kļūst vietējo pasažieru un kravu pārvadājumu nodrošināšana, kā arī starptautisko pārvadājumu attīstīšana ar Rietumeiropu. Tam tiek pakārtota arī jaunu dzelzceļa līniju būvniecība.

POLSKA
1919-1940





ST. DOBELE.



Second World War



The Soviet Era

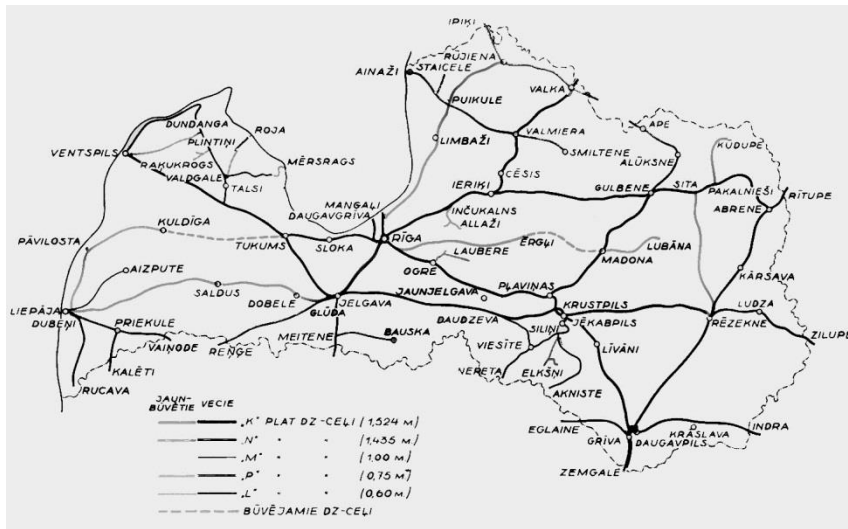


Statistics - past

- From 1860 till 1945 totally built 3400 km of railway lines,
- 30 % of them - narrow gauge (less than 1435 mm gauge) railways,
- 50 % of them – secondary railways (Nebenbahn) + narrow gauge railways.

Railway network

1940



2010



Statistics - present

- Total length of operational railway lines today is 1850 km,
- During last 50 years we have lost 1550 km (or 45%) of railways,
- We have just 153 operational railway stations instead 370 in 1940.

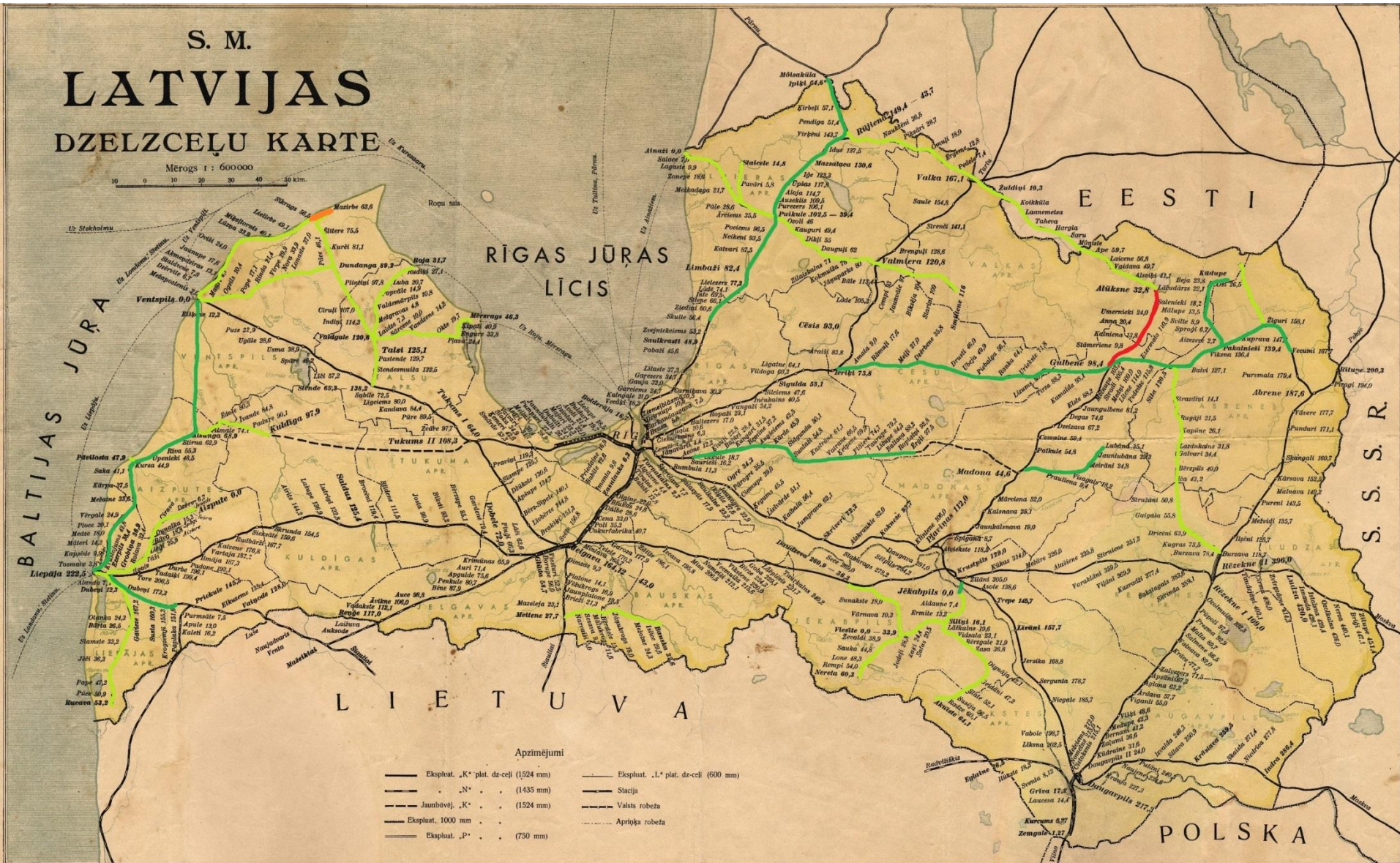
Our potency and problems

S. M.

LATVIJAS DZELZCEĻU KARTE

Mērogs 1 : 600000

0 10 20 30 40 50 km



Ex-railway lines are suitable for tourism, like cycling, but...

- Almost all narrow gauge railways were dismantling in 1960-1970-ties. And in some cases it is even problematic to find any trace of them (marked in light green on the map).
- Not all broad gauge railways after the removal of the track is cleaned up - sleepers are not harvested or (that is more pity) bridges have been stolen and gravel from embankments illegally removed.





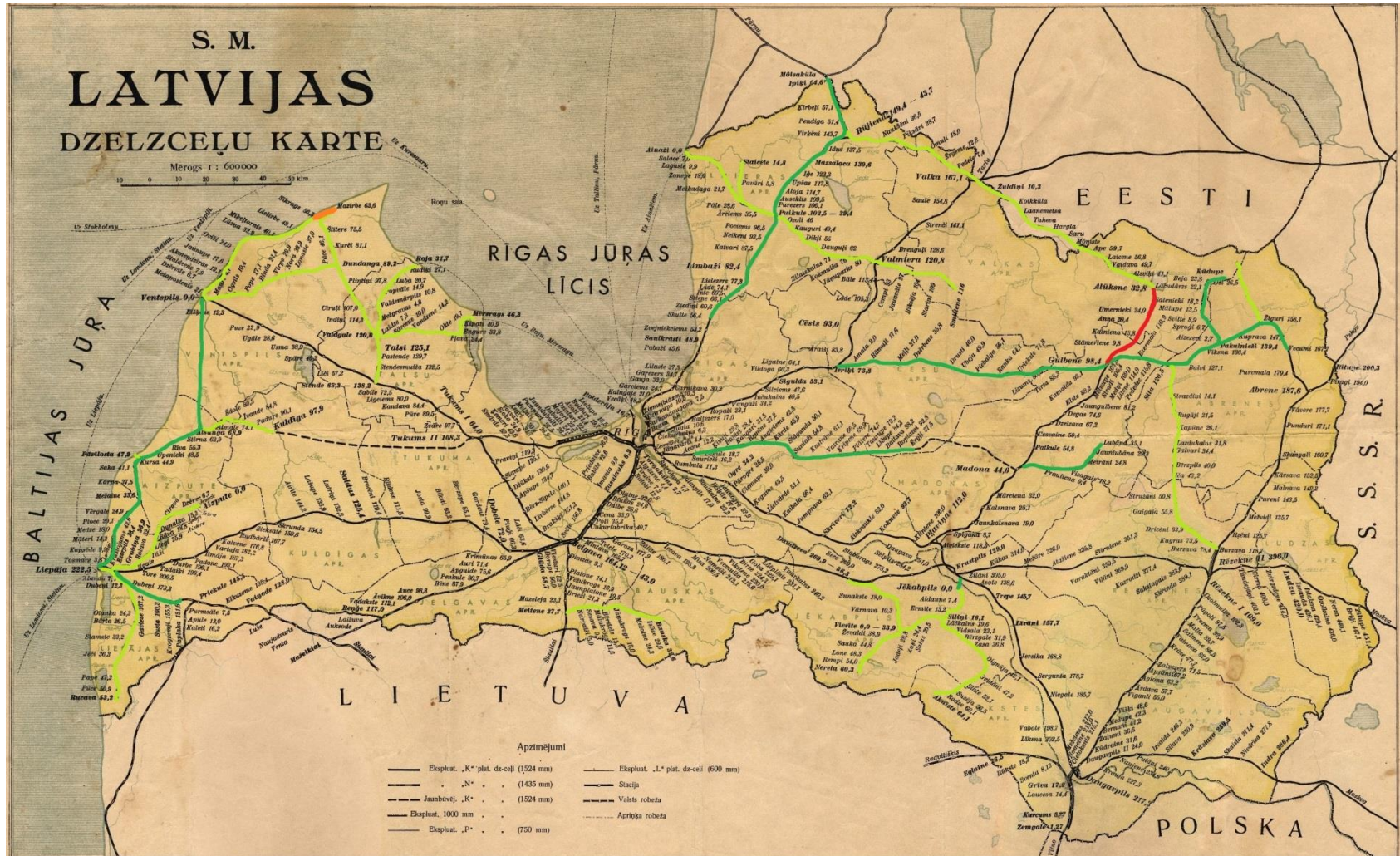
Potential solution



Greenway Mazirbe-Sīkrags



Potential Greenway: Mazirbe-Ventspils-Pāvilosta-Liepāja





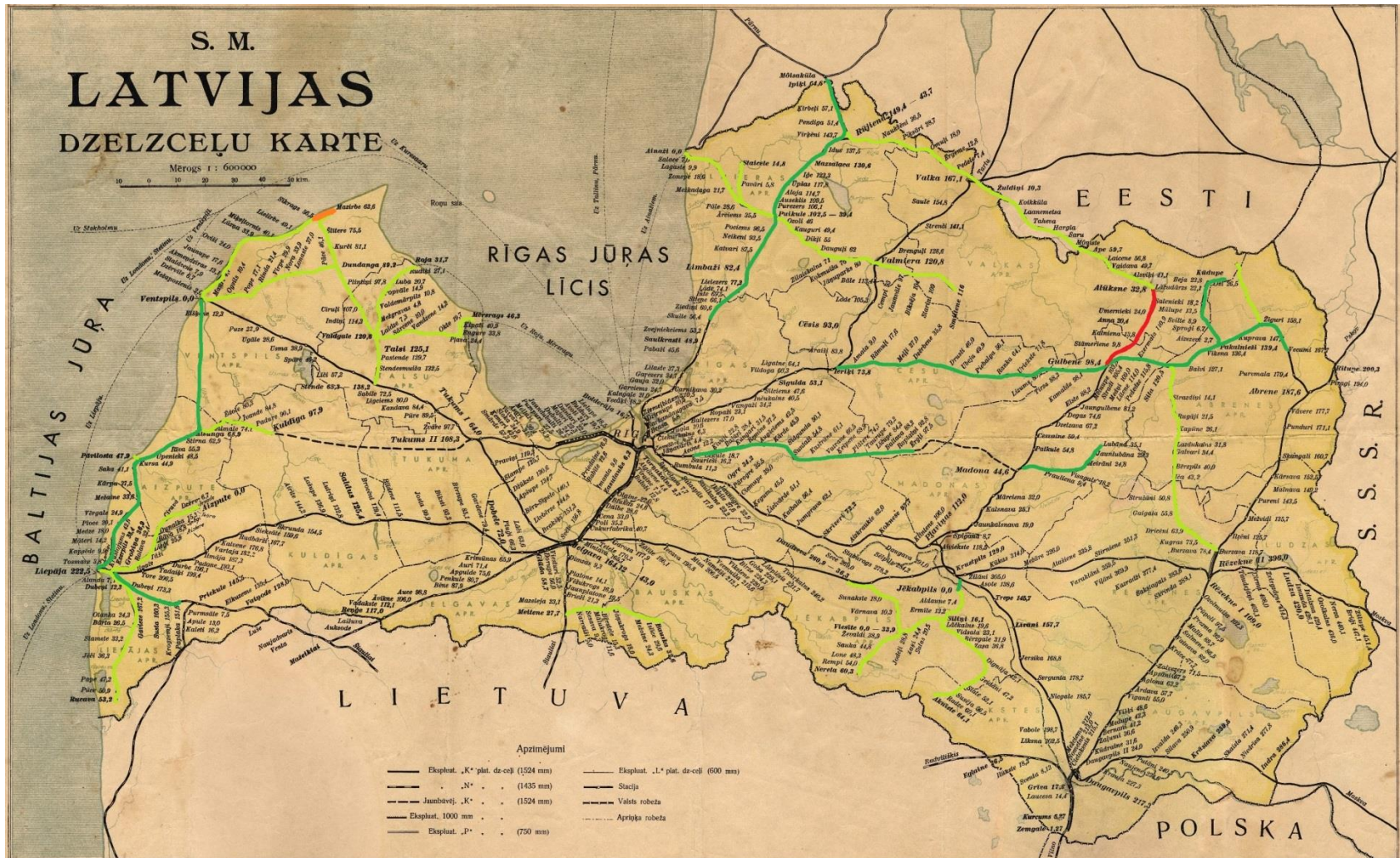




S.Eisenstein's Communication Centre in Keipene



Some more wild possibilities?



Outing by inspection trolley





What we really have done?

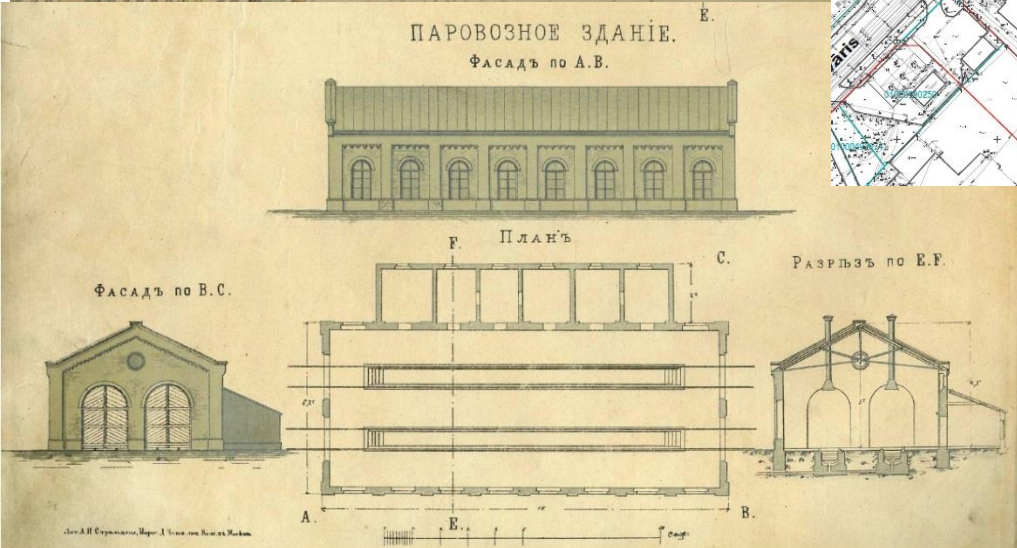
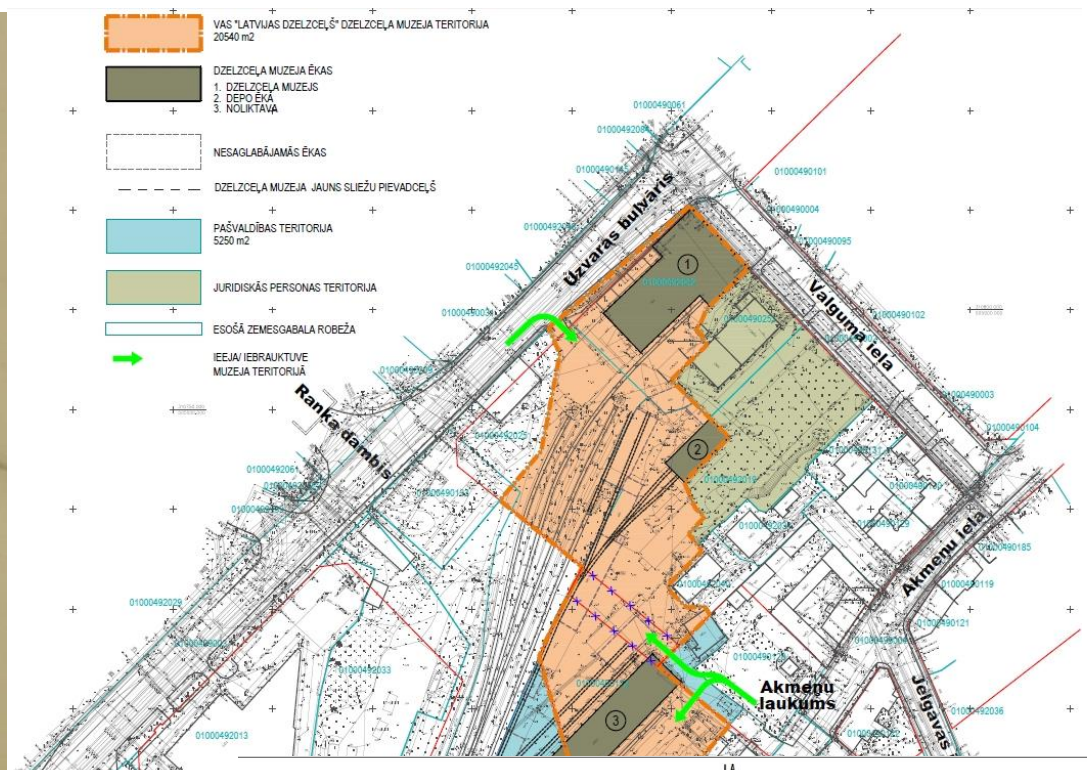


Latvian Railway history museum



Founded in 1994 as LDZ structure the museum:

- Has completed renovation of old locomotive workshops as main museum building,
- Has acquired and restored 26 rolling stock units,
- Has collected ca. 20'000 items such as photographs, postcards, documents, books, badges about Latvian railway history,
- Has published several books about Latvian railway history,
- Has launched an ambitious museum expansion project in the historic railway station area.



Gulbene – Alūksne 750 mm narrow gauge railway



Started from 2002 as private company

Gulbenes – Alūksnes bānītis:

- Continue regular passenger traffic,
- Has restored 2 steam locomotives,
- Has overhauled 3 diesel locomotives and 5 passenger coaches,
- Has rebuilt 1 passing loop,
- Restores 1 station building,
- Restores historic water tower and they features,
- Focuses on the development of tourism.



LOKOMOTĪVES
APSTĀŠANĀS
VIETA

SF 13
Ferdinands
KĀRĒJĀS
PĀRĀRĀDĪBAS
KĀRĒJĀS
PĀRĀRĀDĪBAS
KĀRĒJĀS
PĀRĀRĀDĪBAS



Гр N



Ventspils open air museum



Founded in 1962, but just in last 10 years the museum:

- Has rebuilt old 1 km long 600 mm narrow gauge railway circle,
- Has Built new 3 km narrow gauge railway line,
- Has Built 2 new original railway station buildings as replicas,
- Has built new locomotive shed and some railway auxiliary buildings as replicas,
- Has restored 2 steam locomotives,
- Has restored 1 shunter and 8 wagons.



Viesīte museum *Sēlija*



Founded in 2000 the museum:

- As their home has chosen former Viesīte railway junction area.
- Has renovated wooden locomotive workshops,
- Has restored 1 steam locomotive,
- Has restored 2 wagons,
- Is arranged an historical railway exhibition,
- Has launched a locomotive depot restoration project.

Thank you!

